



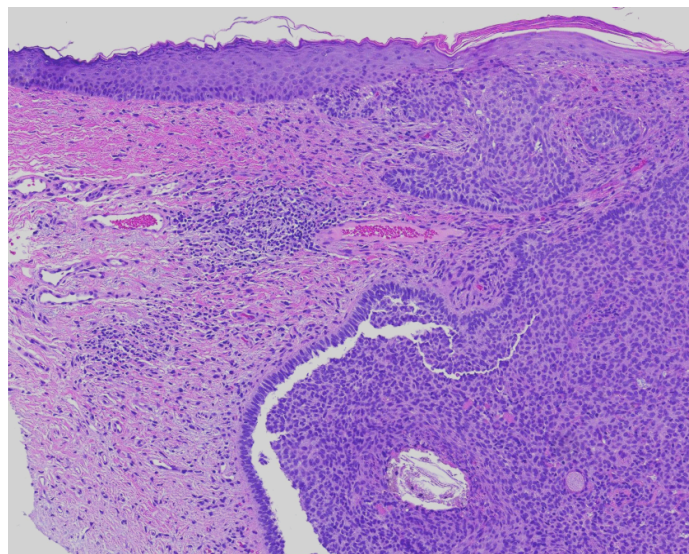
## CPC February 2026 Newsletter

### ----- MAJOR LAB EXPANSION DRIVES INNOVATION AND CAPACITY -----

CPC Pathology opened its lab in Libertyville, IL, in 2009, featuring a single suite with laboratory and office space. The laboratory has expanded and changed much over the years, and now occupies three suites of laboratory and office space.

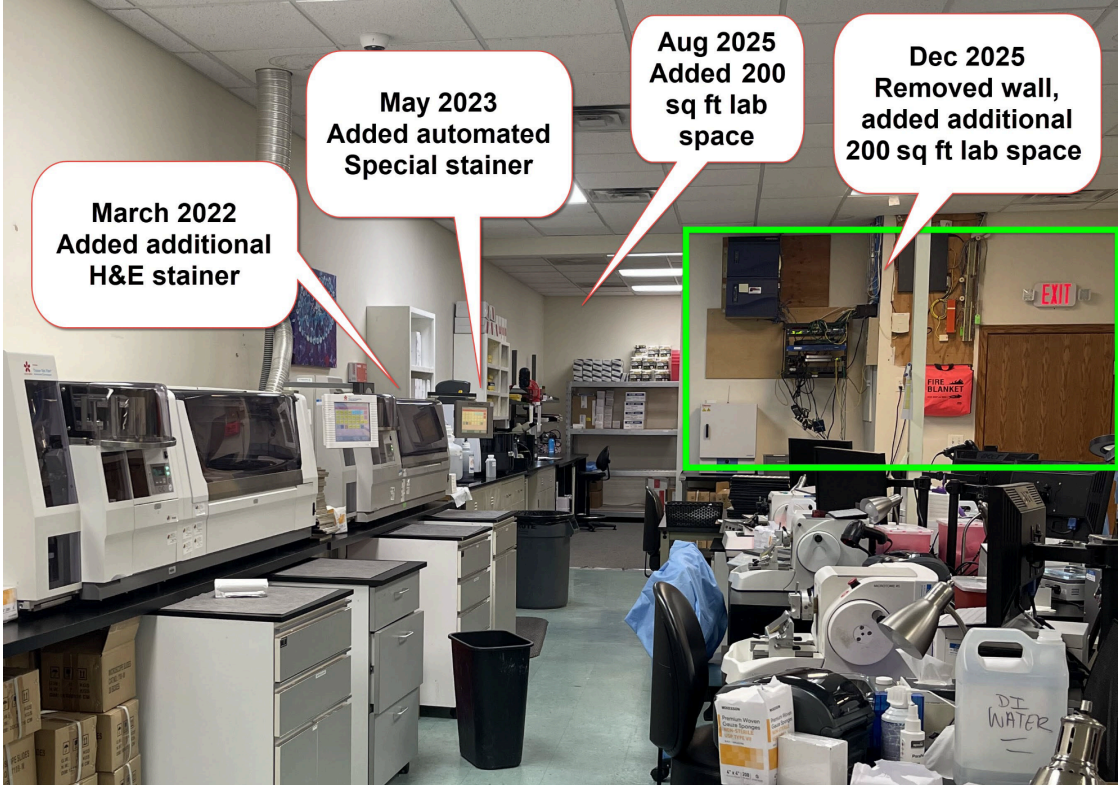
CPC has recently added to its Histology operations with additional state-of-the-art stainers and a new digital slide imager! Here's a summary of the updates:

- **March 2022: Additional H&E Stainer/Coverslipper**
- **May 2023: Automated Special Stainer**
- **October 2023: Two new microtomes/cutting stations**
- **September 2025: New drying oven; added 200 sq ft of lab space**
- **November 2025: Additional IHC stainer**
- **December 2025: New digital slide imager; 200 sq ft of additional lab space**



**One of our beautiful digital images**

**Before wall removal**



**After wall removal and renovation**



Our new, expanded processing area provides a streamlined, modern work area, and our new stainers enhance capacity and meet CPC's growing need to increase throughput.

The new state-of-the-art equipment and improved Histology workflow reflect CPC's commitment to quality and excellence in our pathology services.



**New lab processing space**



**New lab space - imager and IHC stainer**

You might be asking - "Where are the people?" Great question! The images here were taken after very busy overnight/early morning hours, and the histotechs and lab aides are home sleeping after tidying up and preparing for the next night ahead.

Look for more updates about our expanding and growing operations in future editions of our newsletter.

**\*\*\*\*\* Follow CPC on Socials \*\*\*\*\***

**LinkedIn:** Be part of our professional network - connect with us!

<https://www.linkedin.com/company/cpc-pathology>

**Facebook:** <https://www.facebook.com/profile.php?id=61571431648707>

**Instagram:** <https://www.instagram.com/cpclab/> **And...** Read more about us on our website - [www.cpcpathology.org](http://www.cpcpathology.org)